

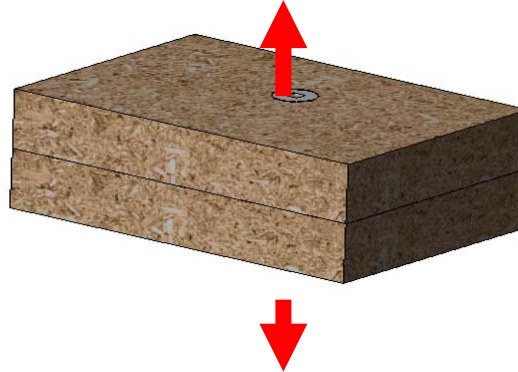
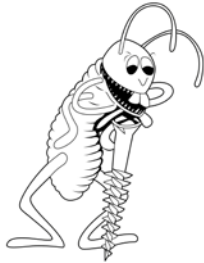




**PARTICLE BOARD SCREWS PULL OUT ON VARIETY OF BOARD**

*Internal Testing Data*

SCREW SIZE: #8X1-1/4  
#9X2-1/2



**(1) PARTICLE BOARD PULL OUT**

SCREW \ BOARD THICKNESS	#8	#9
1/2"+1/2"	881 LB	1049 LB
5/8"+5/8"	899 LB	1070 LB
3/4"+3/4"	937 LB	1114 LB
1"+1"	987 LB	1185 LB

**(2) PLYWOOD PULL OUT**

SCREW \ PLYWOOD THICKNESS	#8	#9
1"+1"	1422 LB	1568 LB

**(3) OSB PULL OUT**

SCREW \ OSB THICKNESS	#8	#9
1/2"+1/2"	620 LB	674 LB
5/8"+5/8"	641 LB	710 LB
3/4"+3/4"	673 LB	740 LB

MEYER WHOLESALE GROUP, INC. FASTENERS ARE MANUFACTURED IN AN ISO 9002 AND ISO 14001 CERTIFIED AND APPROVED FACTORY.

Job Name \_\_\_\_\_

Contractor \_\_\_\_\_ Date \_\_\_\_\_

Submittal Approvals: (Stamps or Signatures)